



## Steel

<b>B</b>	Steel, bare
<b>V</b>	Steel, galvanized according to DIN 50 961, blued
<b>G</b>	Steel, galvanized according to DIN 50 961, passivated
<b>S</b>	Steel, pre-galvanized according to DIN EN 10 327
<b>F</b>	Steel, hot dip galvanized after fabrication (HDGAF) according to DIN EN ISO 1461 (Replacement for DIN 50 976)
<b>FD</b>	Steel, hot dip galvanized after fabrication (HDGAF), double dip method
<b>SB</b>	Steel, black-oxide finish
<b>C</b>	<b>COLOR</b> Steel, pre-galvanized and powdercoated



## Stainless Steel

<b>E1</b>	Material Code.: 1.4016	<b>E4</b>	Material Code.: 1.4401, 1.4404	<b>E7</b>	Material Code.: 1.4547
<b>E2</b>	Material Code.: 1.4310 (AISI 304)	<b>E5</b>	Material Code.: 1.4571 (AISI 316)	<b>E8</b>	Material Code.: 1.4430
<b>E3</b>	Material Code.: 1.4301 (AISI 304)	<b>E6</b>	Material Code: 1.4529	<b>E9</b>	Material Code.: 1.4362

<b>AL</b>	Aluminum (N = naturally anodized, * = powdercoated in RAL colors)
<b>P</b>	Electrotechnical Porcelain
<b>MS</b>	Brass
<b>CU</b>	Copper

## Plastics

<b>K01</b>	PA - Polyamide, non halogen	<b>K13</b>	PC/ABS - Polycarbonate/Acrilonitrile-Butadiene-Styrene
<b>K02</b>	PS - Polystyrene, non halogen, impact resistant	<b>K14</b>	POM - Polyacetal
<b>K03</b>	PE - Polyethylene, non halogen	<b>K15</b>	SBR - Styrene-Butadiene Rubber
<b>K04</b>	PP - Polypropylene, non halogen	<b>K16</b>	CR/NBR - Chloroprene/Nitrile Rubber
<b>K05</b>	PC - Polycarbonate, non halogen	<b>K17</b>	CR/SBR - Chloroprene/Styrene-Butadiene Rubber
<b>K06</b>	SBR/NBR - Styrene-Butadiene/Nitrile Rubber	<b>K18</b>	TPE - Thermoplastic Elastomer
<b>K07</b>	CR - Chloroprene Rubber	<b>K19</b>	FS 31 - Phenolic Resin
<b>K08</b>	NBR - Nitrile Rubber	<b>K20</b>	SI - Silicone Rubber
<b>K09</b>	PVC hard - Hard Polyvinylchloride	<b>K21</b>	PUR - Polyurethane
<b>K10</b>	PVC - Polyvinylchloride	<b>K22</b>	PET - Polyethylene Terephthalate, halogen free
<b>K11</b>	ABS - Acrylonitrile-Butadiene-Styrene	<b>K23</b>	GRP - Glass-Fiber Reinforced Polyester, halogen free
<b>K12</b>	ASA - Acrylate-Styrol-Acrylonitrile Copolymer	<b>C1</b>	Epoxy Coating

	New		Reference Note		35 Siderail Height in mm
	Info		Hardware		1 Wire Diameter in mm
	Installation Instructions		Fast Install		Phase Out Model

For worldwide product identification add 40 13339 (Niedax/Germany) in front of the **EAN** Codes listed in the catalog section.

All Cable Tray and Ladder Products listed in this catalog (other than KRC/KRO ladder) are



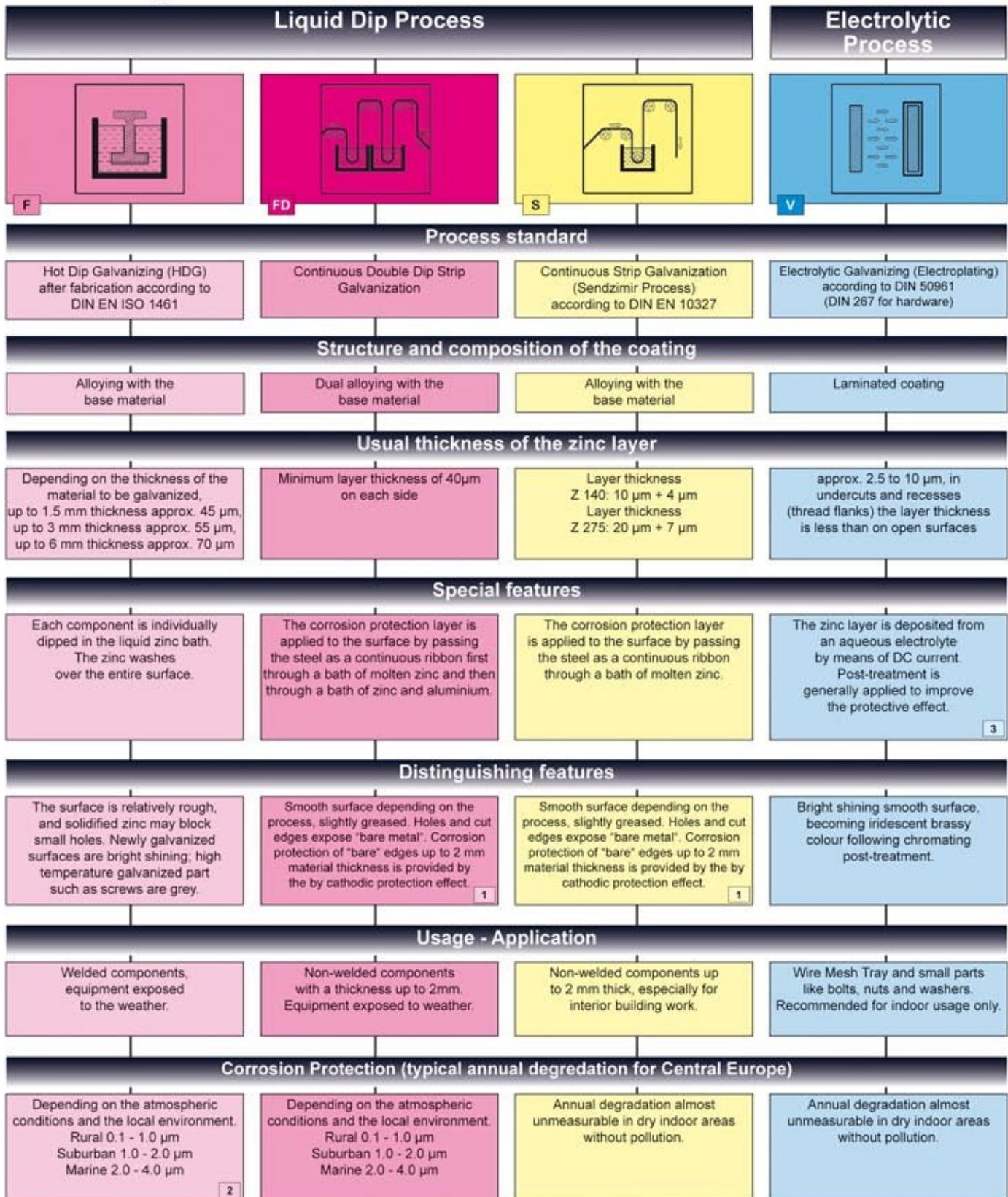
Cable Tray System Products are classified by UL in accordance to NEMA VE1-1998 for USA and CAN/CSA - C22.2 No. 126.1-98 for Canada



Surface Metal Raceway System Products are listed by UL in accordance to UL 5 for USA and CAN/CSA - C22.2 No. 62-93 for Canada

**Important notice:** The information herein has been carefully checked for accuracy and is believed to be correct and current. No warranty, either expressed or implied, is made as to either its applicability to or its compatibility with specific requirements of this information, nor for damages consequential to its use. All design characteristics, specifications, tolerances and similar information are subject to change without notice.

# Galvanizing Processes



**1** Components over 2 mm in material thickness are hot dip galvanized at NIEDAX

**2** Local environmental conditions would be for instance the direct corrosive effect of a chimney with CO<sub>2</sub> flue gases.

**3** Chromating process is ROHS compliant.