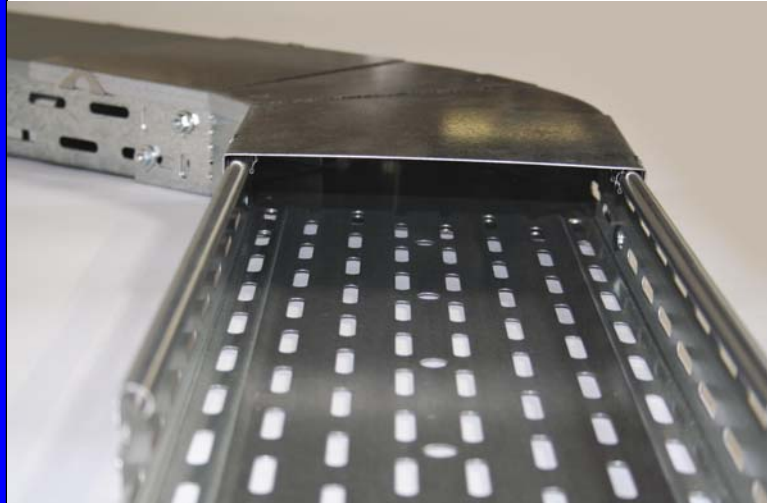


**EASILY CHANGE  
DIRECTIONS!**



## **RBAV & RBAVD SERIES MULTI-ANGLED ELBOW FITTINGS**

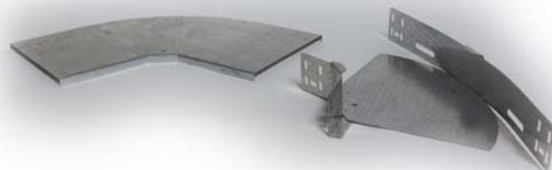
For flexible cable tray installations

### **Advantages:**

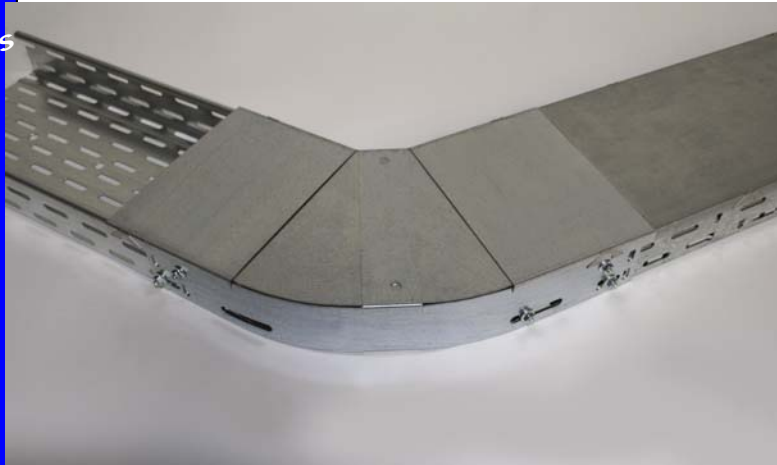
- Flexible design allows you to make horizontal angles from 0° to 90°
- Reduced labor times / reduced costs
- Patented Cover System
- Rounded corners allow for easier cable pulling
- Optimal efficiency on jobsite...allows for adaptation to any obstacle on the job

Niedax-Kleinhuis USA, Inc.  
2260 Westbrooke Drive  
Building K  
Columbus, OH 43228

800-544-2105 / Toll Free  
614-921-8469 / Local  
614-921-8676 / Fax



Available in side-rail heights  
 60mm, 85mm & 110mm!  
 (2") (3") (4")



For use with Tray types: RLVX..., RLX..., RLUX..., RLC..., RLCU..., RSX..., RSUX..., RSVX...

Also available for 85 & 110 side rail heights!

Part #	Size H x W mm	Material Thickness	Incl. hardware FLM 6 x 12	Weight / Piece lbs.	Unit of Measure
RBAV 60.100	60 X100	1 mm	8	.61	1
RBAV 60.200	60 x 200	1 mm	8	1.40	1
RBAV 60.300	60 x 300	1 mm	8	2.46	1
RBAV 60.400	60 x 400	1 mm	8	3.65	1
RBAV 60.500	60 x 500	1 mm	8	5.21	1
RBAV 60.600	60 x 600	1 mm	8	7.10	1

Part #	Size W mm	Material Thickness	Incl. hardware FLM 6 x 12	Weight / Piece lbs.	Unit of Measure
RBAVD 60.100	100	1 mm		.72	1
RBAVD 60.200	200	1 mm		2.13	1
RBAVD 60.300	300	1 mm		4.62	1
RBAVD 60.400	400	1 mm		7.41	1
RBAVD 60.500	500	1 mm		11.0	1
RBAVD 60.600	600	1 mm		15.68	1

